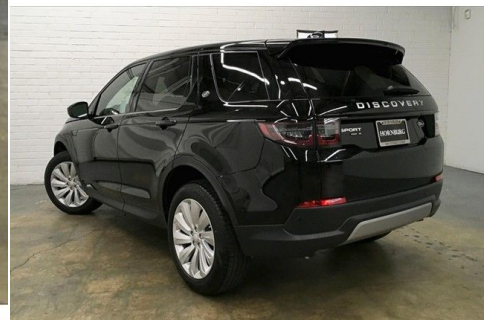




# 2020 DISCOVERY SPORT

\$49,253

SE Automatic



| Model Year | Mileage  | Transmission | Bodystyle | Color | Registration |
|------------|----------|--------------|-----------|-------|--------------|
| 2020       | 10 miles | Automatic    | 4 Door    | Black | R12682       |

## Retailer Comments

This 2020 Land Rover Discovery Sport SE is proudly offered by Hornburg Los Angeles. This Land Rover includes: KEYLESS ENTRY Keyless Start Power Door Locks Keyless Entry FIXED PANORAMIC ROOF Panoramic Roof Generic Sun/Moonroof Sun/Moonroof EBONY MORZINE HEADLINER WIRELESS DEVICE CHARGING FRONT FOG LIGHTS Fog Lamps \*Note - For third party subscriptions or services, please contact the dealer for more information.\*

Want more room? Want more style? This Land Rover Discovery Sport SE is the vehicle for you. There's a level of quality and refinement in this Land Rover Discovery Sport SE that you won't find in your average vehicle. This 4WD-equipped vehicle handles any condition on- or off-road with the sure footedness of a mountain goat. With unequaled traction and stability, you'll drive with confidence in any weather with this Narvik Black 2020 4WD Land Rover Discovery Sport SE. Marked by excellent quality and features with unmistakable refined leather interior that added value and class to the Land Rover Discovery Sport SE. Put away your phone and focus on the road, your new vehicle has navigation.

## Hornburg Land Rover Los Angeles

9176 W Sunset Blvd,  
 Los Angeles,  
 CA,  
 90069  
 United States  
 (310) 432-5900

## Opening Times

|           |                  |
|-----------|------------------|
| Monday    | 9:00am - 8:00pm  |
| Tuesday   | 9:00am - 8:00pm  |
| Wednesday | 9:00am - 8:00pm  |
| Thursday  | 9:00am - 8:00pm  |
| Friday    | 9:00am - 8:00pm  |
| Saturday  | 9:00am - 7:00pm  |
| Sunday    | 11:00am - 6:00pm |

Every effort has been made to ensure the accuracy of the information above, however, errors may occur. Do not rely entirely on this information but check with your retailer about items which may affect your decision to purchase.